

Backing up and restoring a configuration (e.g. after PC replacement)

PC-DMIS Preset & Measure und PC-DMIS Preset & Measure
Supervisor

Contents

1. General.....	2
1.1. Introduction	2
1.2. Note	2
2. Backing up data	3
2.1. Preset & Measure.....	3
• „Import/Export“ area	3
• Start and end of data backup.....	4
• „Default“ area (no export)	5
2.2. Supervisor.....	6
• Export	6
2.3. Important notes	6
3. Restoring backed up data	7
3.1. Preset & Measure.....	7
• „Import/Export“ area	7
• Start and end of recovery	8
• „Default“ area (no import)	9
3.2. Supervisor.....	9
• Import	9
3.3. Important notes	10
4. About Hexagon.....	11

1. General

1.1. Introduction

The purpose of this guide is to support you in backing up and restoring an existing configuration.

This procedure is necessary if, for example, the PC is replaced.

Backing up and restoring all data eliminates the need to reconfigure PC-DMIS Preset & Measure (hereinafter Preset & Measure) and PC-DMIS Preset & Measure Supervisor (hereinafter Supervisor).

Even after careful checking, errors in this user manual cannot be ruled out.

For this reason we reserve the right to make typographical errors and mistakes

Please contact us:

https://nexus.hexagon.com/community/public/pc-dmis/pc-dmis-solution-modules/i/solution_modules_idea-center

If you have any suggestions for improving this user manual, please send an e-mail to:

[DE DGU WET Customer Solutions](#)


1.2. Note



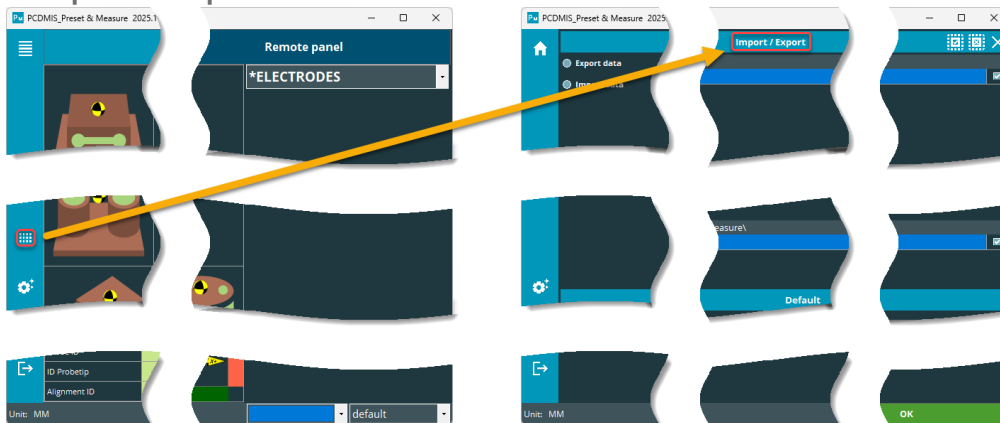
This symbol indicates that you should read the corresponding text with particular attention.

2. Backing up data

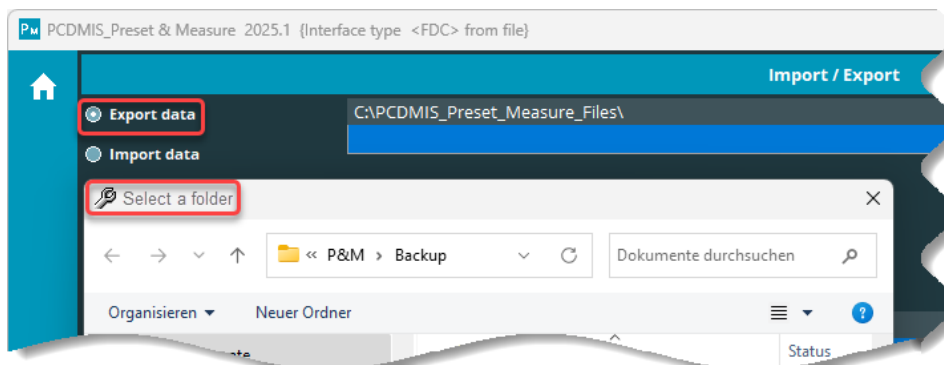
2.1. Preset & Measure



To export the data, use the “” (Management) button. If the mouse pointer is moved over the button, a tooltip appears with the note “Administration”. Clicking on the button opens a dialog window with the “Import/Export” and “Standard” areas.

- “Import/Export” area



The “Export” radio button is then selected. The file manager opens in which the path and folder for the data backup can be specified.

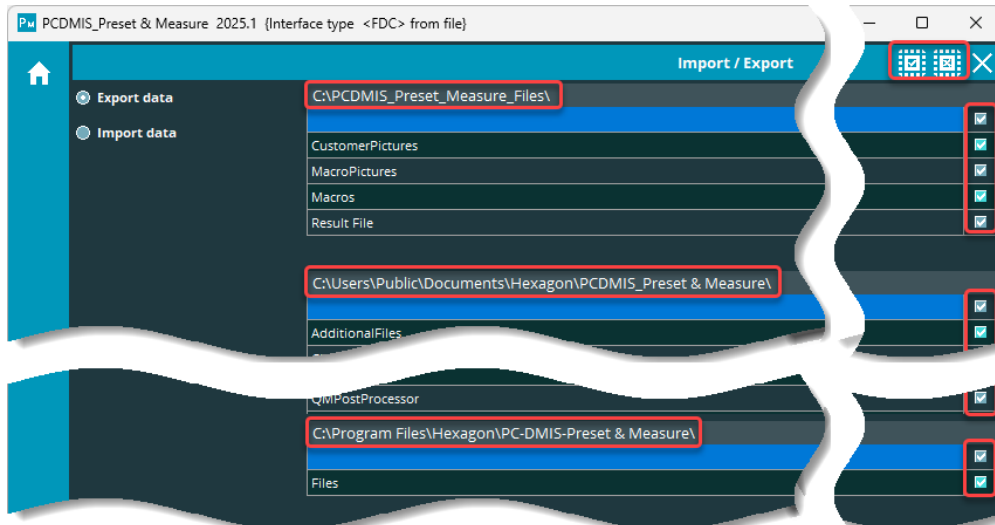


Then, in the areas “C:\PCDMIS_Preset_Measure_Files”, “C:\Users\Public\Documents\Hexagon\PCDMIS_Preset & Measure” and “C:\Program Files\Hexagon\PC-DMIS-Preset & Measure”, you can decide which data you want to save by activating or deactivating the checkboxes. This can be done for each checkbox individually or with the buttons “” (set all markings) or “” (delete all markings).

If the mouse pointer is moved over the respective button, a tooltip appears with a note on the respective function.

All data for which the checkbox is activated is copied to the destination folder defined above. It must be ensured that all files to be backed up are available in the corresponding source folders.

If there are subfolders (including self-created ones) in the selected folders, these are also copied.



All checkboxes are activated by default. This setting is recommended as it will back up all relevant data for the new installation.

- Start and end of data backup

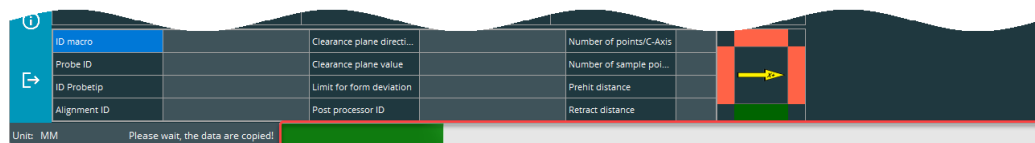


The radio button in the “[Default](#)” area for “[Set default](#)” (see below) must not be activated.

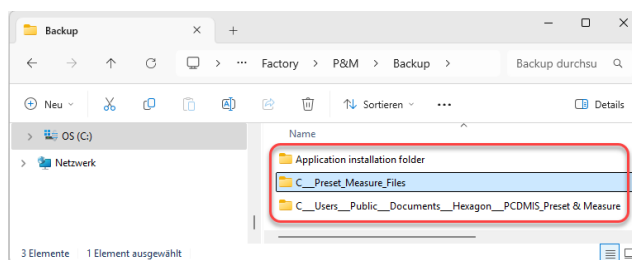
Clicking on the “OK” button (bottom right) switches to the “Start” view and starts the data backup.



A green bar indicates the progress.



After the data backup, corresponding subfolders are available in the destination folder (data from the installation and work directory).



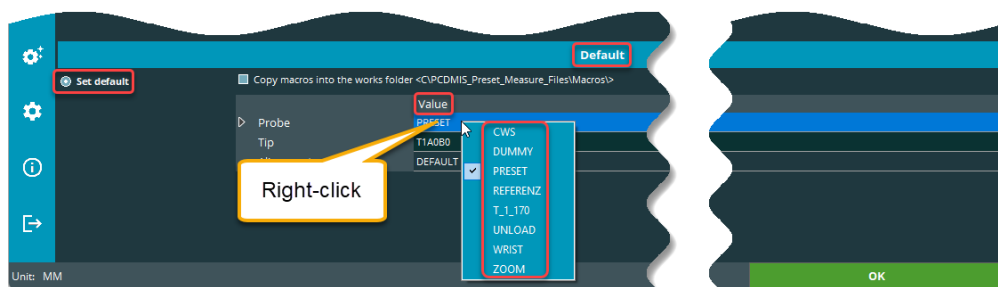
- „Default“ area (no export)

This function is irrelevant for data backup, but is described for the sake of completeness.



If the “Set default” radio button is activated, no data backup takes place. Only the corresponding macros are updated as described below.

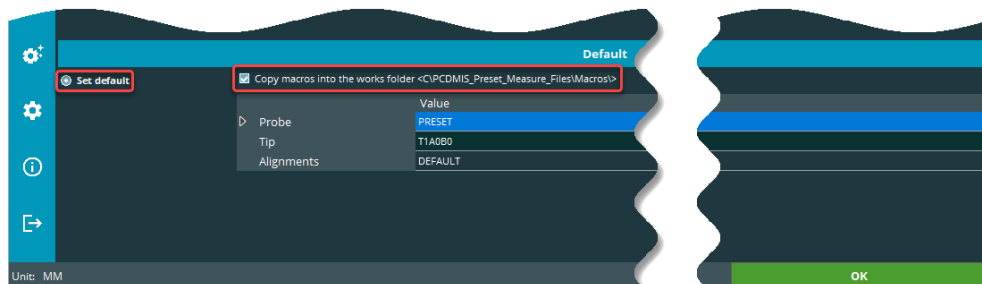
After selecting the folder for the data export, by activating the “Set default” radio button, probes, probe tip and alignment can be quickly assigned to all lists (except “Measurement routines from folder”). Right-clicking in the corresponding row (in the example below at “Probe”) in the “Value” column opens a context menu from which the desired parameters can be selected.



The macros in the installation folder are updated.

- Copy macros into the works folder
<C:\PCDMIS_Preset_Measure_Files\Macros\>":

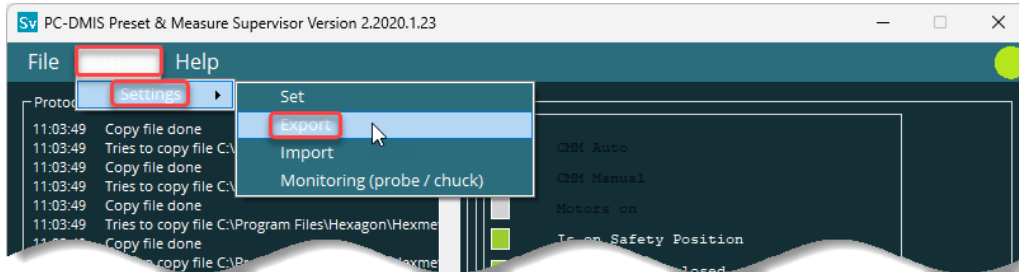
If you also want to update the macros in the working directory, activate this checkbox.



Click the “[OK](#)” button (see above) to switch to the “Start” view and start the process. A green bar indicates the progress (see picture [above](#)).

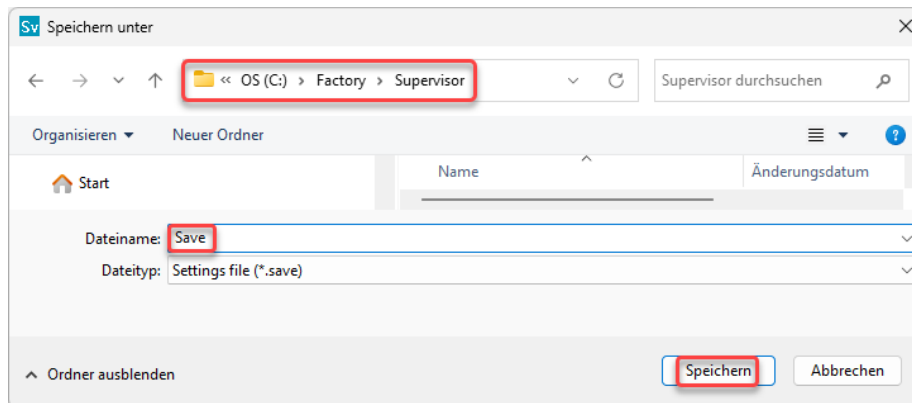
2.2. Supervisor

The data is backed up using the “Extras” → “Settings” → “Export” menu item.



- **Export**

After selecting “Export”, the file manager opens in which the folder and name for the data backup can be selected. Clicking on “Save” closes the file manager and saves all relevant data.



2.3. Important notes



If Preset & Measure and the Supervisor have been fully customized for the first time, it is recommended to make a complete backup of the configuration on an external data medium. This allows it to be quickly restored in the event of a PC failure, for example



In order to restore your original configuration, the following data must also be backed up manually (if available):

- License files from the respective installation directories
- Own images if they have not been saved in the default directory
- Own measurement routines (macros) if they have not been stored in the default directory
- Probe data
- External alignments
- PC-DMIS Settings Editor


3. Restoring backed up data

3.1. Preset & Measure

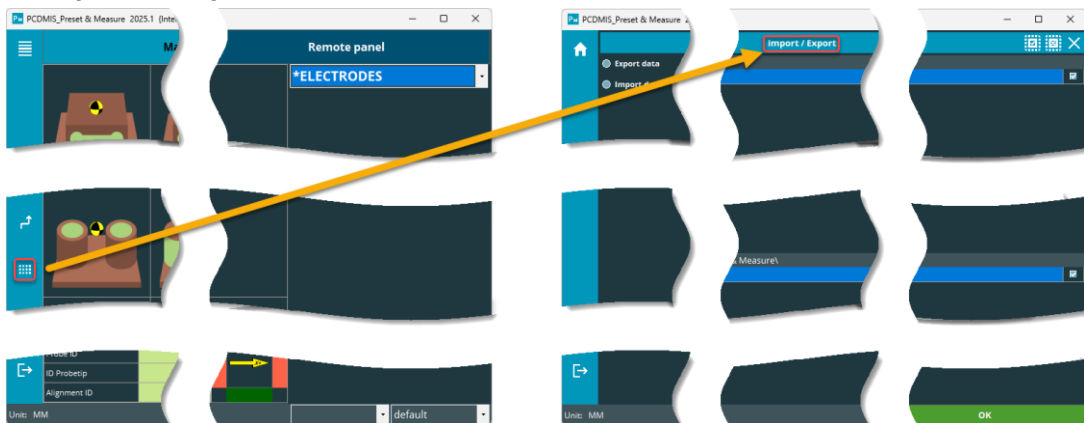
If necessary, install the software. Download link:

[Preset & Measure Download](#).

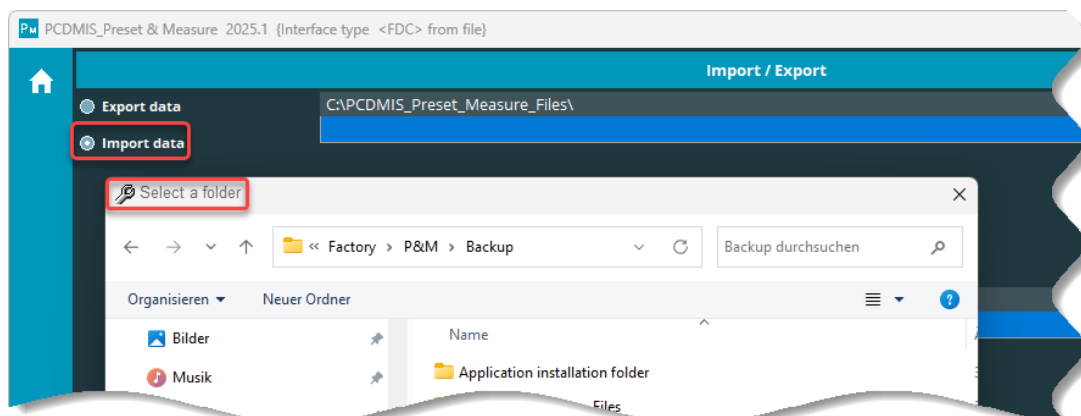
If the main version has not changed, copy the backed up license file (EDM_NET_license.dat) to the installation directory. If the main version has changed, create a license request. Please refer to the installation instructions (link: [Installation instructions](#)) for details.

Start Preset & Measure. As with the export, the “” (management) button is also used for the import. If the mouse pointer is moved over the button, a tooltip appears with the note “Management”. Clicking on the button opens a dialog window with the “Import/Export” and “Standard” areas.



- „Import/Export“ area



The “Import data” radio button is then selected. The file manager opens in which the path and folder for importing the data can be specified.

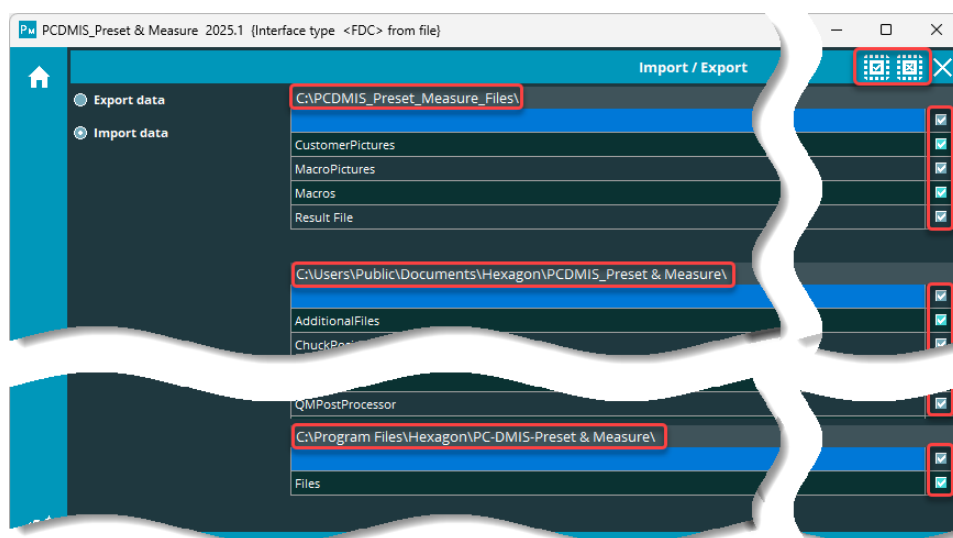


Then, in the areas “C:\PCDMIS_Preset_Measure_Files”, “C:\Users\Public\Documents\Hexagon\PCDMIS_Preset & Measure” and “C:\Program Files\Hexagon\PC-DMIS-Preset & Measure”, you can decide which data to restore by activating or deactivating the checkboxes.

This can be done for each checkbox individually or with the buttons “” (Set all markings) or “” (Delete all markings).

If the mouse pointer is moved over the respective button, a tooltip appears with a note on the respective function.

All data for which the checkbox is activated is restored. If there are subfolders (including self-created ones) in the selected folders, these are also taken into account.



All checkboxes are activated by default. This setting is recommended as it restores all relevant data.

- Start and end of recovery

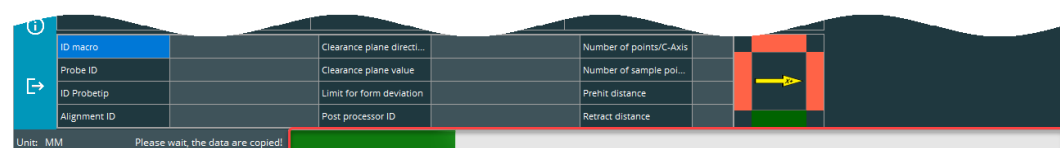


The radio button in the “[Default](#)” area for “[Set default](#)” (see below) must not be activated.

Clicking on the “OK” button (bottom right) switches to the “Start” view and starts the data recovery.



A green bar indicates the progress.



After restoring, Preset & Measure can be used as usual.

The data in the selected folder is retained.

- „Default“ area (no import)

This function is irrelevant for data recovery. The function is described in the [“Default” area](#) (see above)..



If the [“Set default”](#) radio button is activated, the data is *not* restored. Only the corresponding macros are updated as described above.

3.2. Supervisor

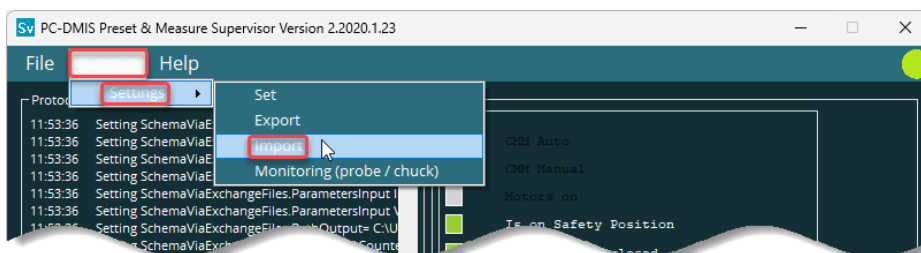
If necessary, install the software. Download link:

[Supervisor Download](#).

If the main version has not changed, copy the backed up license file (Supervisor_license.dat) to the installation directory. If the main version has changed, create a license request. Please refer to the installation instructions (link: [Installation instructions](#)) for details.

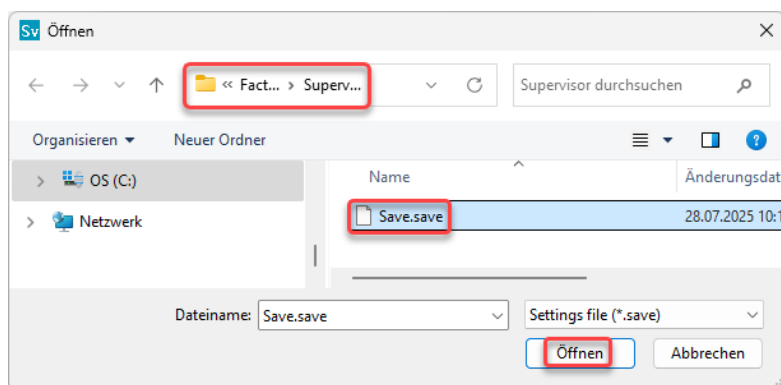
Start the supervisor.

The data is backed up with the menu item “Extras” → “Settings”→ "Import".

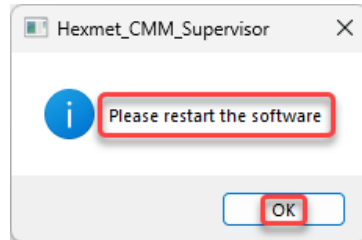


- Import

After selecting “Import”, the file manager opens in which the path and name for the backup file can be selected. Click on “Open” to close the file manager.



After the data import, a message appears stating that the software must be restarted. Confirm with “OK” to close the supervisor.



Once restored, the supervisor can be used as usual.

The file in the selected folder is retained.

3.3. Important notes



The data must be imported in the language in which the data was exported.

In order to restore your original configuration, the following data must also be copied manually (if available):

- License files from the respective installation directories
- Own images if they have not been saved in the default directory
- Own measurement routines (macros) if they have not been stored in the default directory
- Probe data
- External alignments
- PC-DMIS Settings Editor



4. About Hexagon

Hexagon is the global leader in measurement technologies.

We provide the confidence that vital industries rely on to build, navigate, and innovate.

From microns to Mars, our solutions ensure productivity, quality, safety, and sustainability in everything from manufacturing and construction to mining and autonomous systems.

Hexagon (Nasdaq Stockholm: HEXA B) has approximately 24,800 employees in 50 countries and net sales of approximately 5.4bn EUR.

Learn more at [hexagon.com](https://www.hexagon.com).